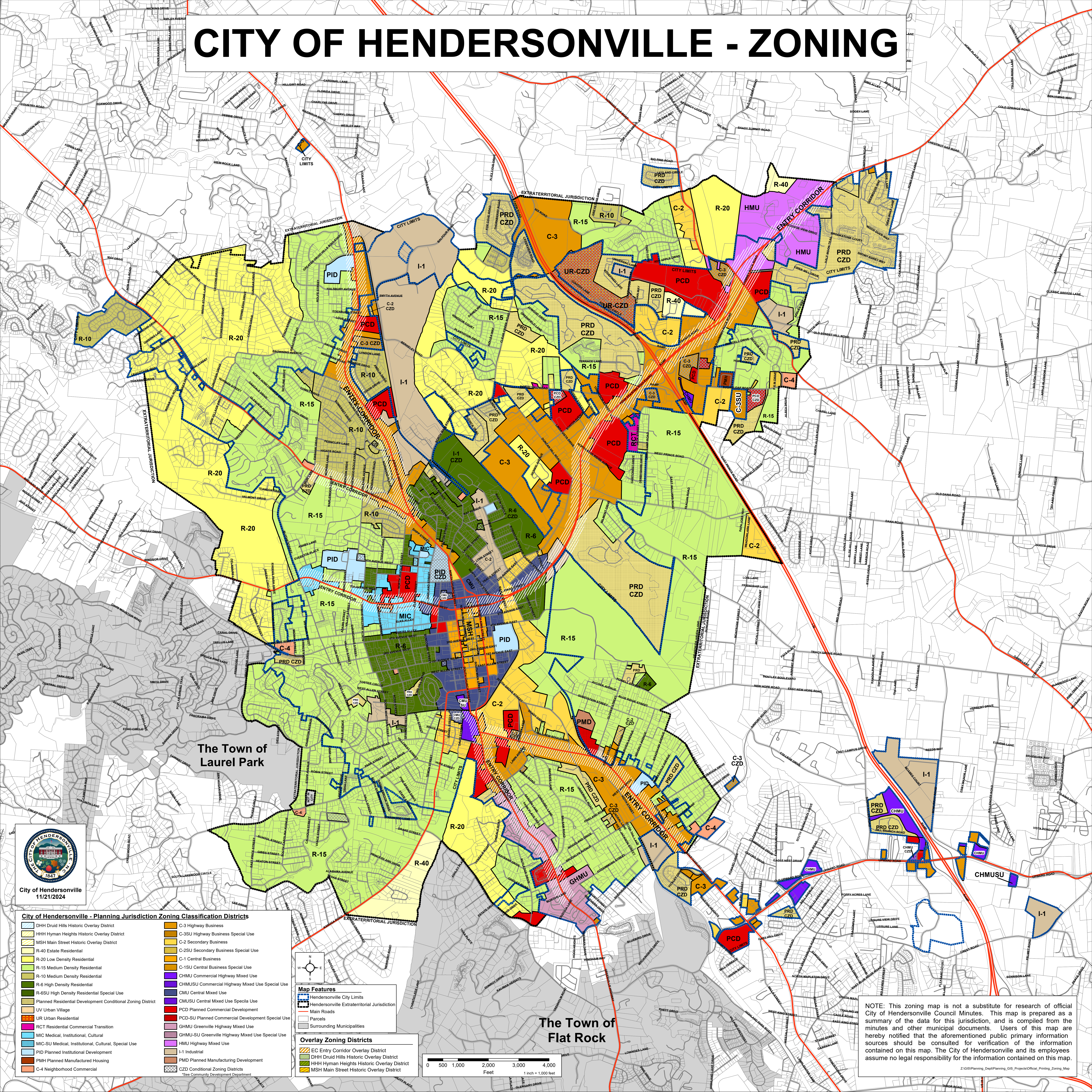


# CITY OF HENDERSONVILLE - ZONING



**City of Hendersonville - Planning Jurisdiction Zoning Classification Districts**

DHH Druid Hills Historic Overlay District	C-3 Highway Business
HMH Hyman Heights Historic Overlay District	C-3SU Highway Business Special Use
MSH Main Street Historic Overlay District	C-2 Secondary Business
R-40 Estate Residential	C-2SU Secondary Business Special Use
R-20 Low Density Residential	C-1 Central Business
R-15 Medium Density Residential	C-1SU Central Business Special Use
R-10 Medium Density Residential	CHMU Commercial Highway Mixed Use
R-6 High Density Residential	CHMUSU Commercial Highway Mixed Use Special Use
R-6SU High Density Residential Special Use	CMU Central Mixed Use
Planned Residential Development Conditional Zoning District	CMUSU Central Mixed Use Special Use
UV Urban Village	PCD Planned Commercial Development
UR Urban Residential	PCD-SU Planned Commercial Development Special Use
RCT Residential Commercial Transition	GHMU Greenville Highway Mixed Use
MIC Medical, Institutional, Cultural	GHMU-SU Greenville Highway Mixed Use Special Use
MIC-SU Medical, Institutional, Cultural, Special Use	HMU Highway Mixed Use
PID Planned Institutional Development	I-1 Industrial
PMH Planned Manufactured Housing	PMD Planned Manufacturing Development
C-4 Neighborhood Commercial	CZD Conditional Zoning Districts

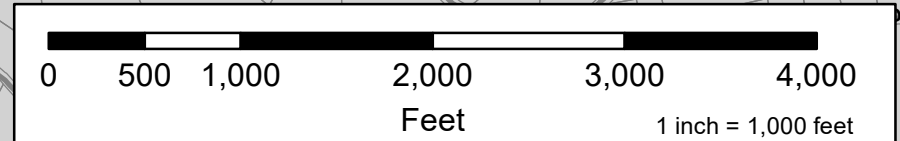
\*See Community Development Department

**Map Features**

- Hendersonville City Limits
- Hendersonville Extraterritorial Jurisdiction
- Main Roads
- Parcels
- Surrounding Municipalities

**Overlay Zoning Districts**

- EC Entry Corridor Overlay District
- DHH Druid Hills Historic Overlay District
- HMH Hyman Heights Historic Overlay District
- MSH Main Street Historic Overlay District



NOTE: This zoning map is not a substitute for research of official City of Hendersonville Council Minutes. This map is prepared as a summary of the data for this jurisdiction, and is compiled from the minutes and other municipal documents. Users of this map are hereby notified that the aforementioned public primary information sources should be consulted for verification of the information contained on this map. The City of Hendersonville and its employees assume no legal responsibility for the information contained on this map.

Z:\GIS\Planning\_Dept\Planning\_GIS\_Projects\Official\_Printing\_Zoning\_Map